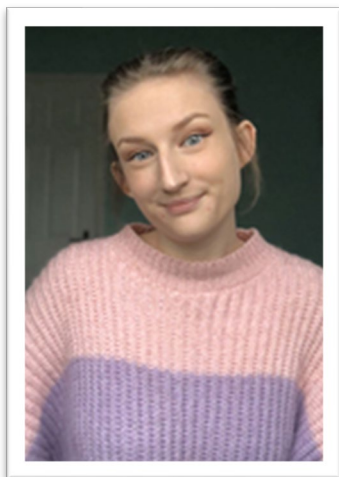


# PHOEBE MEADES

## (VICE PRESIDENT, EDUCATION & WELFARE)



*A vote for Phoebe is a vote for a dedicated, passionate candidate who will empower and represent the student voice*

My name is Phoebe Meades and I want to be your next Vice President, Education & Welfare. I have spent 4 years at Winchester, studying for my undergraduate and then a Master's in Project Management, and in that time, I have grown to love the University and the Student Union. I believe I have the experience and drive to be able to represent every student and their welfare during their studies.

I am incredibly passionate about what the Student Union stands for and have been involved with the Union since joining Winchester in 2017, most prominently as a Front of House member for 3 years, as well as in the events team to help plan and deliver some of our key events, as the Event and Marketing assistant. Throughout my studies, I have been a Student

Representative (StAR) and was fortunate enough to be elected as Chair in my third year. I have also been a part of the Student Senate, representing the Services Zone. I know that I have the knowledge and experience to be the person who can make your experience at Winchester the best it can be.

Being at University is an exciting time for any student, and I know I will be able to do all I can to represent the student body and empower the student voice. If I am fortunate enough to be elected as your Vice President, I will focus on the following:

### Education:

- Update the tuition fee breakdown so students know where their money is going, especially with online teaching
- Ensure contact time is adhered to so students can still benefit from online teaching
- If the pandemic comes to an end, ensure online learning can continue for accessibility needs for students with chronic or invisible illnesses, care requirements, or commuting students so no one has to miss out on learning due to circumstances outside of their control
- Introduce workshops surrounding life after University so students feel prepared after leaving education

### Welfare:

- Ensure funding for the Advice Centre continues to maintain welfare support for all students including Student Recharge Days, either online or on campus
- Work with housing team to ensure students are looked after in halls if they are self-isolating through the supply of food parcels, containing ample provisions and access to focused online support
- Work with the University to improve mental health services. Many students find the current system confusing or lacking in the vital provisions needed to effectively support students
- Work with the University Student Engagement team to increase awareness of welfare resources within the Student Union by promoting the Advice Centre and maintaining a presence at Open Days
- Ensure campaigns focused on welfare remain sustainable and limit the use of single-use resources whilst building upon campaigns such as 'Go Green Week'