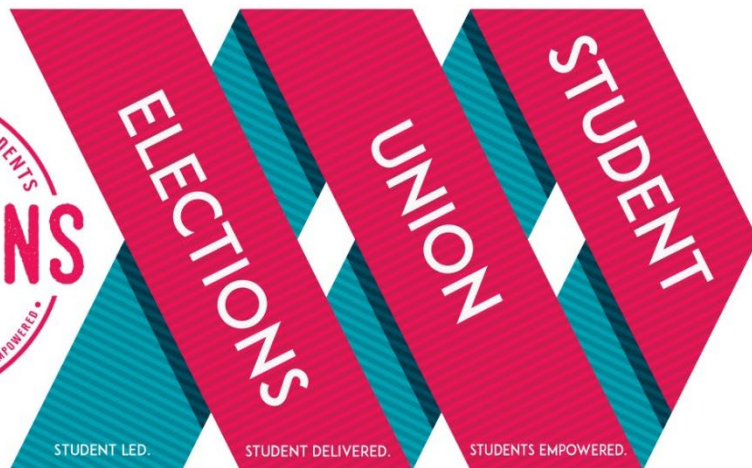


BY-ELECTIONS 2024

# CANDIDATE PACK



[WWW.WINCHESTERSTUDENTS.CO.UK/SUELECTIONS](http://WWW.WINCHESTERSTUDENTS.CO.UK/SUELECTIONS)

## Congratulations on taking the first step towards becoming an Elected Officer of Winchester Student Union!

Each year we elect 5 Student Officers, however due to a candidate withdrawal, in the recent elections (held February-March 2024), one fewer candidates stood for the role of Student Officer than seats initially available. As such, a by-election to fill the one remaining available post is being held.



In this **Candidate Pack** you will find most of the information you will need as a candidate in the Student Union Officer By-Elections. This includes how to run a successful campaign within the **rules and regulations** of Winchester Student Union Elections.

**Please note that under our elections regulations you are not able to announce your candidacy, promote yourself as a candidate, or campaign for votes until the campaign period begins at 9am on Monday 25<sup>th</sup> March 2024.**

**In order to officially become a Candidate within the Student Union Officer By-Elections, you must complete the Candidate Confirmation Form to formally confirm your understanding of the elections rules and regulations. This must be completed at your earliest opportunity following Candidate Briefing. Failure to complete this form by 12pm on Saturday 23<sup>rd</sup> March 2024 will mean you will be withdrawn from the by-elections.**

**COMPLETE THE CANDIDATE CONFIRMATION FORM HERE:**  
<https://winchesterstudentunion.typeform.com/to/FIIXV4IP>



# CONTENTS OF THIS GUIDE:

- **Timetable for the by-election (p4)** – key dates and actions required.
- **By-Elections Officials (p5)** – who is responsible for the by-election, final arbitration of decisions and 'day to day' running of the by-elections.
- **The Candidates (p6)** – a full list of candidates running in this year's by-elections.
- **Winchester Student Union (p7)** – information about the Union to provide context to your campaign and help your understanding of the Union.
- **Elections Ethos & Principles / Breach of Conduct (p11)** – the principles and regulations by which we define and run our elections.
- **Campaigning (p13)** – guidance and regulations regarding how to run a campaign, further information to be provided at Candidate Briefing.
- **Union Promotional Support (p19)** – our promotion of your candidacy
- **Once Voting Closes... (p21)** – more information about Candidate Expenses, and the Candidate Gathering where you can enjoy some time to relax after voting closes.
- **Election Results (p21)** – information about how and where By-Election Results will be released.
- **Appendix: Bye-Law 3: Election Regulations (p21)** – the central rules by which all Union elections are run.

# TIMETABLE FOR THE BY-ELECTION

Date	Time	Activity
THURS 21/03/24	5pm- 6.30pm	<b>Candidate briefing (mandatory)</b> for all candidates) held in St Alphege (SAB) 001 Complete the <a href="#">Candidate Confirmation Form</a> ASAP
SAT 23/03/24	12pm	Deadline for candidates to submit manifesto changes and 60-second campaign video
MON 25/03/24	9am	Campaigning begins
TUES 26/03/24	9am	Voting Opens <a href="http://www.winchesterstudents.co.uk/vote">www.winchesterstudents.co.uk/vote</a>
WED 27/03/24	<b>12pm</b>	<b>Complete an <u>expense claim</u> by this time (even if you didn't spend any money).</b>
	12pm	Voting closes
	1.30pm	<b>Candidate Gathering</b> Candidates are invited to come to the Terrace Bar Lounge (Level 2 of the King Alfred Centre) for some free refreshments and take a bit of time to relax and de-stress in the gap between voting closing and results being announced. This gathering will be hosted by our Advisor & Wellbeing Coordinator, Amy. Our Weekly Wellbeing Café will then begin from 2pm-4pm in the Lounge, which candidates are welcome to stay on for.
	5pm	By-Election results announced on the Student Union website ( <a href="http://www.winchesterstudents.co.uk">www.winchesterstudents.co.uk</a> ) and across Union social media.



# BY-ELECTIONS OFFICIALS

The following list of individuals form the elections officials for this by-election.

**National Union of Students (NUS)** – Returning Officer  
**Tiffany Burnett** – Deputy Returning Officer

Overall responsibility for the administration and arbitration of this by-election resides with the Returning Officer (RO). The RO is appointed on an annual basis by the Board of Trustees of Winchester Student Union. The RO on this occasion is the National Union of Students (NUS), and the Trustees are satisfied that the appointed RO is appropriately qualified to execute this role.



The Deputy Returning Officer (DRO) is responsible for the day-to-day running of the by-elections and is the person who formally answers questions on the rules, and makes rulings on common queries, to ensure the by-election runs as smoothly as possible.

## Additional Student Union Staff By-Elections Support

**Ben Robson** – Student Voice Coordinator

**Andrew Hodgson** – Chief Exec

**Anna Harvey** – Communications Coordinator

**Your main point of contact will be Tiff, you can email her at:**

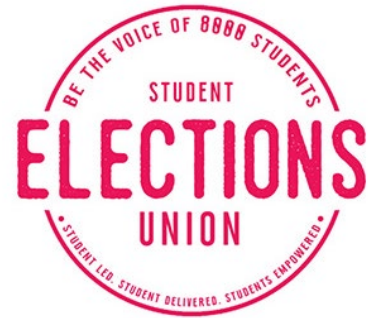
[SUElection@winchester.ac.uk](mailto:SUElection@winchester.ac.uk) (or [Tiffany.Burnett@winchester.ac.uk](mailto:Tiffany.Burnett@winchester.ac.uk))



# THE CANDIDATES

The following list represents all posts and candidates standing in the Union Officer By-Elections 2024.

*R.O.N. or Re-open Nominations is a candidate in all elections and represents the constituents desire to reopen nominations for further candidates.*



**There are 4 (3 not including R.O.N.) candidates standing for 1 position.**

## **Student Officer (x1 positions available)**

Part time, voluntary roles designed to be undertaken alongside your studies.

[Click here to read the Student Officer Role Pack](#)

**KAYLA ELLINGTON**

**ISOBEL JONES**

**ROGER QUILLIAM**

**R.O.N. (Re-open Nominations)**

# WINCHESTER STUDENT UNION

## OUR MISSION & VISION

*“Student Led. Student Delivered. **Students Empowered.**”*

*“Winchester Student Union strives to empower its membership through the provision of exceptional student led and student delivered activities and services”*



## WHAT IS THE STUDENT UNION?

WINCHESTER STUDENT UNION IS A [MEMBERSHIP ORGANISATION](#) RUN FOR STUDENTS, BY STUDENTS

We are dedicated to **representing, supporting** and **engaging** the **8,000+** students that make up our [membership](#).

We...

- Provide a wide range of activities and engagement opportunities for students
- Campaign on important issues to improve the student experience
- Support and represent students

Winchester Student Union promotes inclusion, participation, representation and democracy and we are here primarily to ensure that students can get the absolute most out of their student experience whilst studying at Winchester!

- [More information available on our website](#)

## DID YOU KNOW...? WE ARE NOT THE UNIVERSITY!

Although we work closely with the University and receive an annual block grant of funds from them;

We are two separate organisations, and part of our role as a Union is to hold the University to account and campaign to ensure the University is giving our members (students) the best possible experience during their time at Winchester.



# THE STRATEGY

## 2019-2022



STUDENT LED. STUDENT DELIVERED. STUDENTS EMPOWERED.

### OUR GUIDING PRINCIPLES

### COMMUNICATION

*The right to be informed*

### DEMOCRACY

*The right to choose*

### REPRESENTATION

*The right to be heard*

### EDUCATION

"We will empower our students to meaningfully and effectively influence their own academic experience; ensuring they can see real change"

**BY 2022 WE WILL ENSURE THAT:**

- Student Representation will be reflective of our diverse membership; active & effective from the classroom to the boardroom.
- Students are aware of their academic rights, routes of appeal and the support available to them.
- Students feel empowered to engage with change making opportunities and encouraged to let their voice be heard.

### WELFARE

"We will empower our students to access necessary and suitable welfare support; allowing them to flourish whilst at university and beyond"

**BY 2022 WE WILL ENSURE THAT:**

- Our students have every chance to be happy and healthy.
- Students have access to the support they need throughout their time at university.
- Students are empowered with the skills and knowledge to support their own wellbeing.

### ACTIVITIES

"We will empower our students to maximise their student experience through the pursuit of extra-curricular and recreational activities"

**BY 2022 WE WILL ENSURE THAT:**

- We have communicated effectively with students the opportunities and activities they can engage with.
- Students have access to the appropriate facilities and resource required to participate.
- Students are seen, valued and empowered to be, active members of the wider community.

### SERVICES

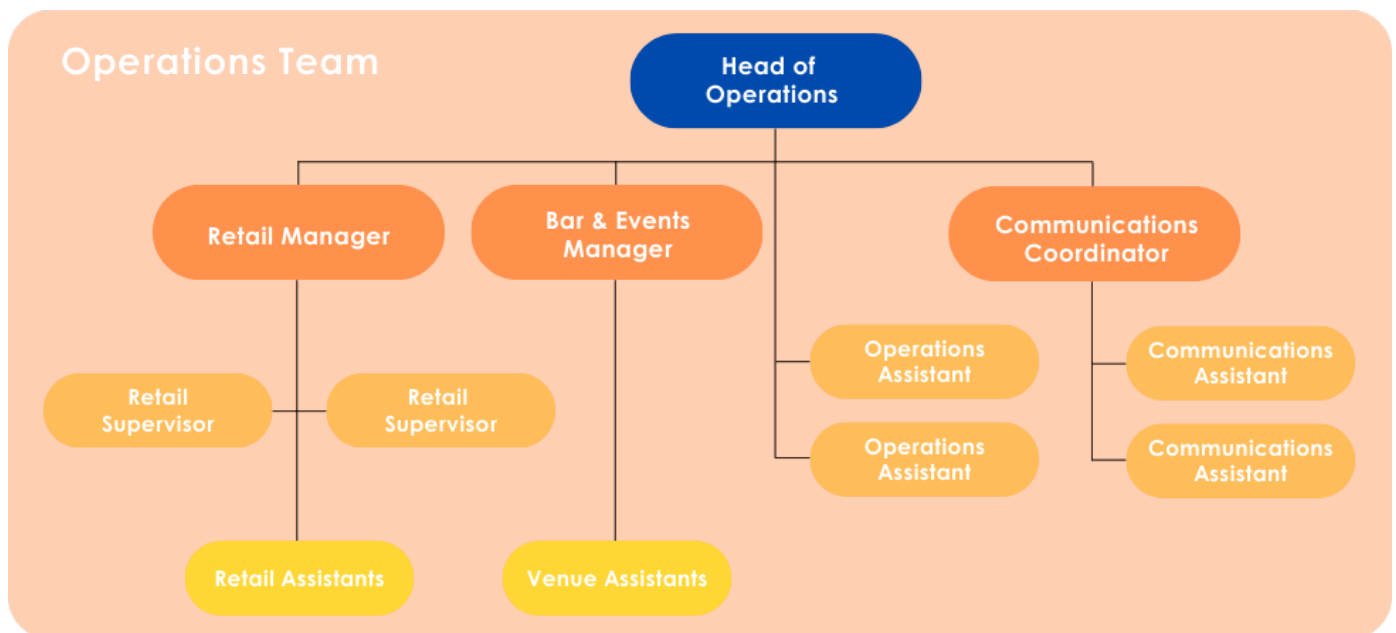
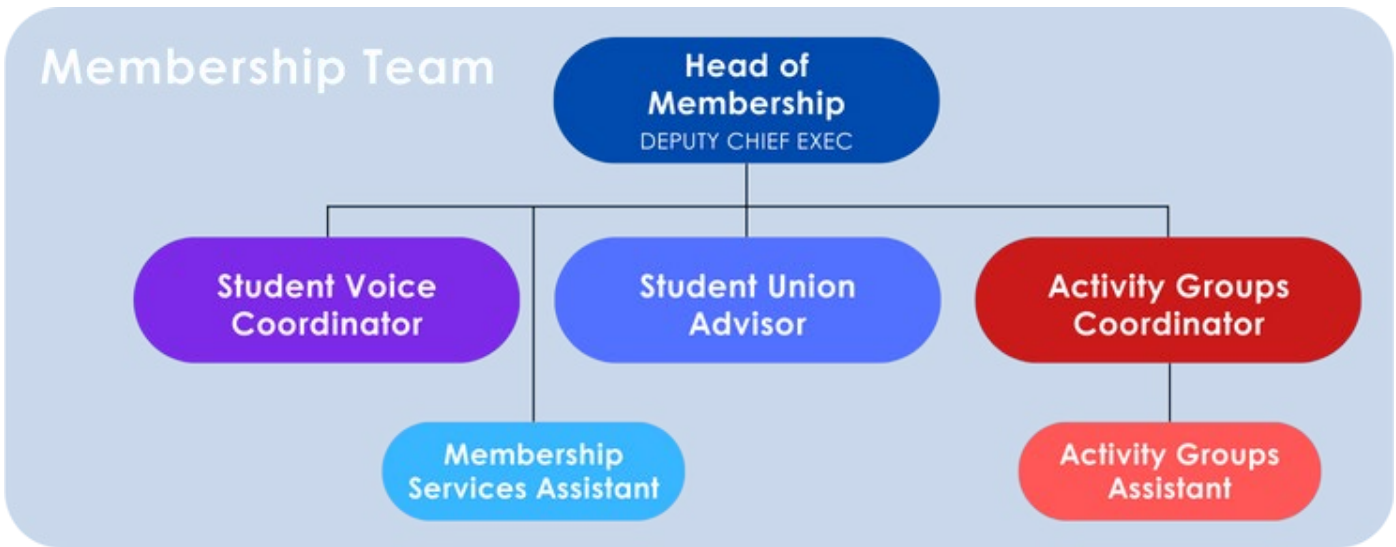
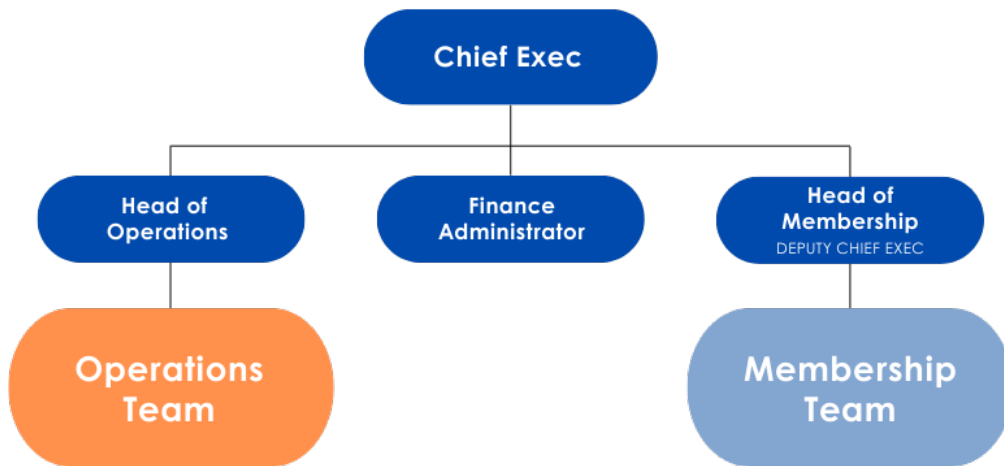
"We will empower our students to understand, and shape, the range of commercial services utilised to support the sustainability of the Union"

**BY 2022 WE WILL ENSURE THAT:**

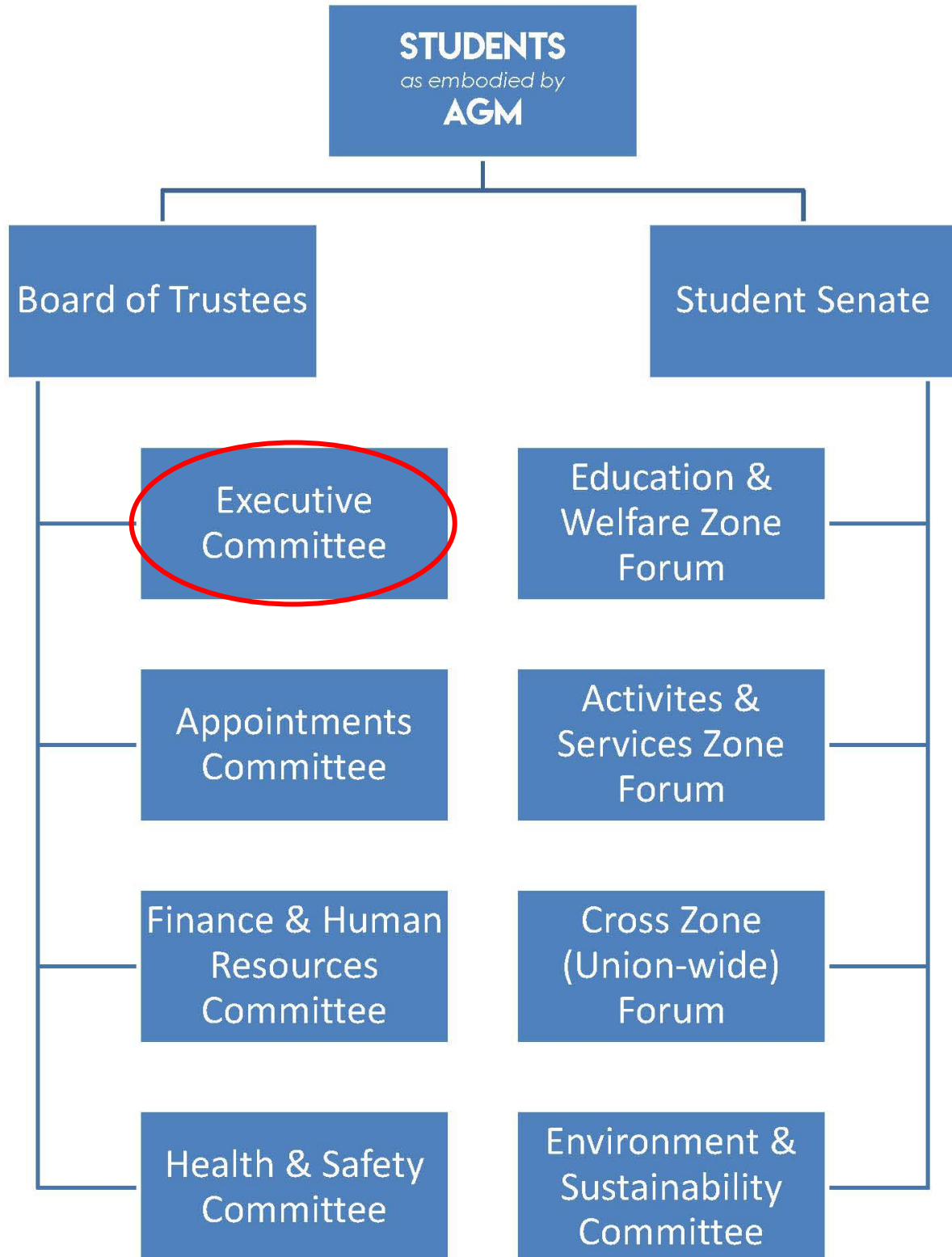
- Through employment, recognise and nurture talent.
- Ensure our students are satisfied with breadth of our services and consider them to be 'value for money'.
- Ensure our services, and the administration of the Union, are suitable and sustainable.

LEARN MORE: [WWW.WINCHESTERSTUDENTS.CO.UK/STRATEGY](http://WWW.WINCHESTERSTUDENTS.CO.UK/STRATEGY)

# STAFF STRUCTURE



DEMOCRATIC STRUCTURE



# ELECTIONS PRINCIPLES & ETHOS

The success of the by-election is dependent upon you the candidate and your ability to successfully promote yourself and persuade students to vote. We would like to create an atmosphere where you can have a contest which is exciting and good natured, leading to a high turnout at the polls.



The following rules contained in this document are designed to help you achieve this. The rules herein are designed to operate to two fundamental principles:

- ***Winchester Student Union wishes to encourage the active involvement and creativity of its members inside the electoral process.***
- ***Winchester Student Union wishes and requires fairness in its elections process.***

The elections rules and associated campaigning and publicity regulations set out the ways in which these two principles are balanced, but are not exhaustive.

As a result, from time to time the Deputy Returning Officer, during the by-election, may vary or further define the regulations herein in the form of rulings. You should check your **unimail** email account regularly to ensure that you are aware of any rulings that have been made.

## THE RULES CONTEXT

During the by-election campaign, you are likely to be involved in a series of activities to promote your candidacy. It is important to remember that during the by-election campaign, you are still bound by sets of regulations that, whilst not strictly part of the election regulations, still have a bearing on your conduct.

**Union Rules:** This includes abiding by the Union's constitution, rules and procedure. If you breach these and the Returning Officer or their nominee does not act under the guidance of the by-election rules, you may still be subject to the Union's disciplinary procedure, which in its ability to revoke membership rights, may put your candidacy in jeopardy.

**University Rules:** The University operates several rules that relate to the student community and use of its facilities and property - e.g. bullying and harassment policy, use of social media, computing use, damage to university property etc. If you breach these and the Returning Officer or their nominee

does not act under the guidance of the by-election rules, you may still be subject to the University's disciplinary procedure, which may also put your candidacy and student status in jeopardy.

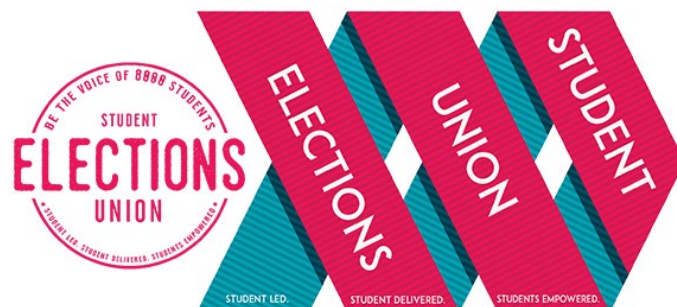
**The Law:** The fact that you are standing in the by-election does not remove you from the auspices of the law of the land! Again, if you breach these the Returning Officer or their nominee reserves the right to disqualify you from the by-elections if action taken by appropriate authorities places your candidacy in question.

## BREACH OF CONDUCT

Candidates found to be in breach of any of the guidelines outlined in this pack or those stated in [Bye-law 3 – Election Regulations](#) (see Appendix 1 of this pack) will be dealt with in accordance with Bye-law 3, and may lead to your disqualification from the by-election.

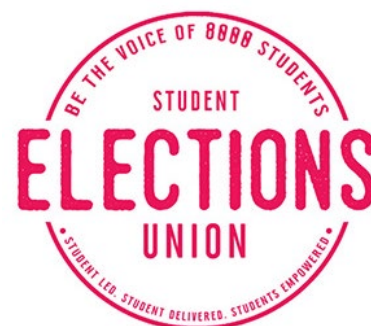
In matters of Election Regulation breaches, The RO's decision is final and binding.

It is your responsibility to ensure that you (or your campaign team/anyone campaigning on your behalf) do not fall foul of these rules.



# CAMPAIGNING

Campaigning is the process by which you publicise your candidacy to the voting constituents of Winchester Student Union and in the interest of fairness is covered by several stipulations.



**Campaigning MUST NOT commence until 9am on Monday 25<sup>th</sup> March 2024.** This means that no social media accounts or posts, flyers, website, items of clothing associated to a candidate's campaign or other means of publicity can be displayed (virtually or otherwise) before this time.

Please note that private conversations, including closed online conversations, or informal/organic face-to-face conversations with friends are not included in this definition of campaigning, and are therefore permitted. *e.g. organic closed in person or online conversations (i.e. via direct message) between one party and another party.* In short, you are able to informally mention to friends/classmates that you are running (and you will need to do so if you are planning to have a campaign team – see below), **however you are not permitted to formally advertise or promote your candidacy in any way until campaigning begins.**

If you are unsure about what constitutes campaigning please check with the Deputy Returning Officer by emailing [SUElection@winchester.ac.uk](mailto:SUElection@winchester.ac.uk)

## CAMPAIGNING TEAMS

The nature of election campaigns can be an intensive and time-consuming period for one person to do alone. For these reasons it can be useful to put together a campaign team, if you would like to. However, you should bear the following in mind:

- 1) You will be held responsible for the actions of any member of your campaign team. Your campaign team is defined as anyone campaigning on your behalf.
- 2) Any materials used by your campaign team to promote your candidacy, with or without your knowledge, will be accountable to your campaign allowance.

## CAMPAIGN ALLOWANCE

You have an allowance to spend on your campaign. To remove any financial barriers to participation in the by-elections, all campaign spend will

be reimbursed by the Student Union. However, to ensure equity, there is a strict limit to how much you can spend:

### Candidates for part time roles (Student Officers)

- Candidates are given the following allowance:
  - up to £20 (which the Union will reimburse)
  - 50 bespoke printed A4 colour documents to be used as flyers/handouts (not posters – see below).

These funds may be spent on any materials or process to promote your candidacy, if they adhere to all issued guidance.

**You must not spend more than your campaign allowance. In such an occurrence, you would be disqualified from the by-election.**

### PRINTING

For this By-Election, following the recent completion of our Officer Elections 2024 and in the interests of sustainability, all candidates running in the Student Officer By-Election **are required to run a poster-free election campaign**. This means that you **cannot print or display any posters** for your campaign (this includes using your own printer, any University printer, or external printing services).

You can however have flyers/handouts using your printing allowance above. If you would like to, you can print multiple flyers per A4 page (e.g. 2 flyer images on one A4 page which you can cut to make 2x A5 flyers). We have a guillotine available for candidate use, so you can crop your flyers down when you come to collect them if you wish to.

The deadline to send us over your flyers (to [suelection@winchester.ac.uk](mailto:suelection@winchester.ac.uk)) is **12pm on Saturday 23<sup>rd</sup> March 2024**, this will allow us to print out your flyers ready for collection at 9am on Monday morning, for the start of campaigning.

### IMPORTANT CAMPAIGN INFORMATION

1. You will be given a campaign allowance as determined above to spend on your campaign. If the Deputy Returning Officer has evidence that amounts being spent are higher than your allowance, by either yourself or your campaign team, then **you may be disqualified from the by-election**.
2. Campaign expenditure shall be defined as “**any expenditure that is carried out with the purpose of promoting a candidate’s election**”. This will include publicity, costume hire, t-shirt production, any props or costumes you use to promote your campaign, web or social media advertising,

'boosting' posts online etc. The RO/DRO's decision on the application of this definition is final, and so you are advised to check your planned campaign activity beforehand by emailing [SUElection@winchester.ac.uk](mailto:SUElection@winchester.ac.uk)

3. As all campaign spend is now reimbursed by the Student Union which is a registered charity, you are not permitted to use any of your campaign allowance to donate to charities. For clarity, should you wish to use your campaign spend for charitable purposes, you would be permitted to make a purchase from a charity (e.g. Oxfam), but you cannot make a donation.
4. Candidates should only do 'what others have had the opportunity to do'. This means that any "sponsorship", "discounts" or "favours" that add a 'value' to your campaign, must be available to **all** candidates in a given election. In this event candidates must report to the DRO before using any such "sponsorship", "discounts" or "favours". The DRO/RO's ruling on the value of such is final.

*Eg. You have received a notification on your new Facebook page offering a discount code / "free boost" for a promotional message on your page, but this code is not freely available to others in your election. This would not be fair or equal and therefore in breach of elections regulations.*

5. Occasionally candidates may wish to express their preference for, or collaborate with, other candidates within the elections. This is permitted providing that no candidate expenditure is associated with this; you must not include other candidates in anything where cost is involved. Your campaign allowance can only be spent for your own promotion, and any expenditure must not involve any other candidates. For example, you would be welcome to tag other candidates in social media posts, providing that the post was not 'boosted' or include paid advertising.
6. Candidates are not permitted to use the Winchester Student Union logo, or logos affiliated with the Union (such as the University of Winchester/StARs/STC logos etc.) as part of their campaign. Current/re-running Officers are not permitted to wear any Union-issued uniform while they are campaigning. Printed or digital material may not include images of garment wearing where logos are visible. Candidates are instead encouraged to use the Student Union Elections logo, which can be downloaded here:  
<https://www.winchesterstudents.co.uk/candidateresources>
7. Candidates should be conscious of any historic social media posts if they are using their personal social media channels for campaigning. Following NUS Guidance, the historic content of any social media channels that are used as part of campaign activity could be considered as part of a

candidate's campaign, so candidates should be mindful of any old social media posts that may bring the Union into disrepute or contravene Union or University policy. As such, candidates may wish to consider creating new campaign-specific social media accounts. Re-running candidates are allowed to 'reactivate' their old campaign pages, should they wish to do so.

8. Activity groups must not show preference to or endorse a single candidate. This is to prevent any candidate, who may or may not be a member of a group, having access to a formal Union platform that other candidates do not. Activity group members may express a candidate preference but only as individual students, not as elected activity group leaders or as a group of members e.g. **not** "The Captain of Lacrosse supports Jane Bloggs" or "Lacrosse say vote for Jane Bloggs". If an activity group reaches out to candidates and invites them to speak to their activity group members: they must ensure all candidates within the election (e.g. all President Candidates) are also invited to attend with a similar level of notice, and ensure each candidate has the same amount of time to speak. If you reach out as an individual to request to promote your candidacy to an activity group: be aware that activity groups must allow this for any other candidate from that election, if/when they reach out with the same request.
9. Union officials shall remain impartial throughout the election and may not promote or endorse individual candidates. Union officials who are also student members may express a preference for individual candidates, whilst not referencing their role within the Union, providing they are not 'on duty' (e.g. student staff) or acting within the capacity of their role.
10. At the close of voting, all candidates are required to declare **all** their expenditure on their campaign – this will include being asked to provide receipts/screenshots of payments, so ensure you keep these. Failure to do so may result in disqualification. Please complete the [campaign expense form](#) by **12pm Wednesday 27<sup>th</sup> March 2024 (before voting closes)**.

If you did not spend any money for your campaign, a '**nil**' return (confirming you did not spend any of your allowance) must be submitted via the same form.

11. All physical campaign materials on campus should be removed as soon as practicable after voting closes. We would strongly encourage you to recycle your campaign materials where possible. Removal includes all fixing used to display (white tack, pins etc.) Any damage caused to Union or University property through the improper use of campaign materials or their fixing, shall be the responsibility of the candidate to make good.

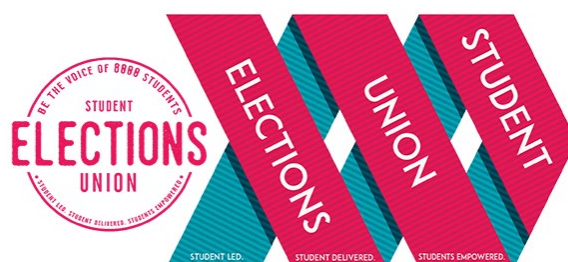
## PUBLICITY MATERIALS

To help publicise voting times, we would recommend any social media posts/graphics you produce contain the following statement:

*You can vote online from 9am Tuesday 26<sup>th</sup> March until 12pm Wednesday 27<sup>th</sup> March 2024.*

*Votes can be cast at <https://www.totum.vote/winchesterstudents>*

- The content of the materials displayed or circulated is the responsibility of the candidate. Material which breaches the Union constitution, rules and/or procedures must be removed, and action may be taken by the DRO/RO in accordance with the regulations.
- Material which makes allegations against individuals or which could render the Union open to legal action, must not be produced. The DRO can instruct that such material is removed until they have taken professional advice.
- Negative Campaigning, campaigning based upon the defamation of other candidates or previous office holders, is not permitted. **Concentrate on the merits of your candidacy, not the demerit of others.**
- Due to the high probability of property damage, the use of stickers to promote your candidacy is not recommended.
- Candidates and their campaign teams or materials should not block doorways and entrances.
- The use of the University digital screens, including the Intranet, is not permitted for this by-election other than to promote the by-election overall. No individual candidate should publicise in this way.
- Unsolicited mass emailing of students is strongly discouraged and is in breach of the University's acceptable use of IT. Furthermore, unsolicited 'spam' messages/emails may harm both your reputation as a candidate and the Union's reputation with members.
- **It is recommended that promotional items be cleared with the Deputy Returning Officer, who may impose further limitations on their use due to legal, logistical or equality reasons.**



## EXCLUSION ZONES

An 'exclusion zone' is an area or place where campaigning is not allowed. No publicity or campaigning material may be displayed by candidates\* or circulated in any *exclusion zone*, except where expressly permitted. **This includes verbal campaigning.**

The Exclusion Zones include:

- The King Alfred Centre (All levels, 1-4)
- The Libraries (Martial Rose and West Downs)
- University commercial areas (including Cyber Italia)
- 5 meters within eyesight from any University of Winchester or Winchester Student Union-owned PC (as voting takes place online, campus PCs are considered a 'polling station' for the purposes of the by-election. For the sake of clarity, mobile devices will not count as polling stations.)
- Winchester Student Union Laundrettes
- The Commuting Students Network Lounge
- Any on-campus polling stations during By-Elections Campaign Week
- The University Intranet is also an Exclusion Zone.

## CAMPAIGN MATERIAL TIPS

**Canva:** If you are looking to design materials you might like to use Canva. Canva is a free, easy to use graphic design platform designed for non-designers! You can use it to create social media graphics, presentations, leaflets, documents and other visual content. Check out their templates section which includes a huge bank of free templates for you to use if you're not sure about designing something from scratch. Search for [www.canva.com](http://www.canva.com) or you can download the app for free.

**Image design tip:** Your images should be simple, containing only the most critical information for your candidacy. Too much information may result in the image being too 'busy' and allowing potential voters to miss your key message. Always try striking visuals, bold colours and sharp fonts as these are bound to turn heads! Be sure you are designing for the right platform, e.g., a webpage image can be larger and contain more detail than one designed for Instagram.

For inspiration try googling "*student election flyer template*".

**Video tips:** Ensure any videos are recorded in a quiet location without background noise if possible. Use natural light if you can (i.e. near a window during daylight). Think about your background and your surroundings which might be visible. Remember that any props or costumes you use to promote your campaign will contribute to your campaign expenditure. Remember body language!

# UNION PROMOTIONAL SUPPORT

All the Union's social media channels will be supporting the by-elections, and during the campaigning window will focus on candidates running for officer roles as follows:

- *Tuesday 26<sup>th</sup> March 2024 – Student Officer Candidates*

The Union's channels are:

**Facebook:** [facebook.com/winchesterstudentunion](https://facebook.com/winchesterstudentunion)

**Twitter:** [@winchestersu](https://twitter.com/winchestersu)

**Instagram:** [@winch\\_su](https://www.instagram.com/winch_su)

We would recommend that you consider using at least one social media platform to promote your candidacy. We have included links to social media account creation and usage guidance below.

[Facebook](#)

[Twitter](#)

[Instagram](#)



The Student Union will allow **one** post per candidate to be shared on our Official Freshers Page on Facebook.

## CANDIDATE PHOTO

All candidates are asked to provide the photo used when completing the nomination form, for the Union's use on our website (this will be your banner/header image for your candidate page) and social media. This should be provided as a standard image file type (jpeg, gif, png etc) once you have completed your nomination, and by **no later than 12pm on Thursday 21<sup>st</sup> March 2024**. Please email to: [suelection@winchester.ac.uk](mailto:suelection@winchester.ac.uk)

## CAMPAIGN VIDEO

Each officer candidate will be given the opportunity to provide a pre-recorded 60 second campaign video to be used across Winchester Student Union's website and social media channels during the campaign period. To ensure equity of production, films will adhere to the following:

- Any music used should be copyright-free (or purchased and declared as campaign expenditure)
- Remember that any unique items used in your campaign video (e.g. props/costumes/hats) will need to be declared as campaign expenditure.
- The video should only feature you, the candidate.

- The video file must be 2GB or under, and no longer than 60 seconds in length.

When completed, your campaign video should be emailed to [suelection@winchester.ac.uk](mailto:suelection@winchester.ac.uk) via [WeTransfer](#), along with a transcript sent via email (or you can transcript your own video). The Union will upload your video to your granted page on our website at the start of the campaign period and it will be posted via the Union social media pages on the day your candidate role is being promoted (see above).

**In order for the Union to promote your campaign video, we must have received it by 12pm on Saturday 23<sup>rd</sup> March 2024.**

## **YOUR CANDIDATE PAGE ON THE UNION'S WEBSITE**

All candidates will be provided with a page on the Student Union's website to help support their campaign. Each candidate page will include your candidate photo, your manifesto, and your 60-second campaign video. These pages will be live from the start of Campaigning on Monday 25<sup>th</sup> March 2024.

If you would like us to include links to your social media channels on your Candidate Page, please email us at [suelection@winchester.ac.uk](mailto:suelection@winchester.ac.uk) (we will aim to add these to your webpage within 24hrs of receiving your request).

We would encourage you to include a link to your candidate page on your own campaign materials so students to find out more about you!

<b>NAME ON BALLOT</b>	<b>CANDIDATE WEBPAGE URL</b>
KAYLA ELLINGTON	<a href="http://www.winchesterstudents.co.uk/kaylaellington">www.winchesterstudents.co.uk/kaylaellington</a>
ISOBEL JONES	<a href="http://www.winchesterstudents.co.uk/isobeljones">www.winchesterstudents.co.uk/isobeljones</a>
ROGER QUILLIAM	<a href="http://www.winchesterstudents.co.uk/rogerquilliam">www.winchesterstudents.co.uk/rogerquilliam</a>

# ONCE VOTING CLOSES...

## CANDIDATE EXPENSES

As outlined above (see p.16 of this Pack for full details), you must ensure you have submitted your [campaign spend form](#) by **12pm Wednesday 27<sup>th</sup> March 2024** – including a 'nil' return if you haven't spent any money.

## CANDIDATE GATHERING

On Wednesday 27<sup>th</sup> March, from 1.30pm (in the gap between votes closing and results being announced), candidates are invited to come to the Terrace Bar Lounge (Level 2 of the King Alfred Centre) for some free refreshments and take a bit of time to relax and de-stress. We'll have mindfulness colouring/crafts/games or you can just sit and have a chat with your fellow candidates. This gathering will be hosted by our Advisor & Wellbeing Coordinator, Amy. Our Weekly Wellbeing Café will then begin from 2pm-4pm in the Lounge, which candidates are welcome to stay on for.

# BY-ELECTION RESULTS

By-election results will be announced at **5pm on Wednesday 27<sup>th</sup> March 2024** on the Student Union website, and on our social media.



## APPENDIX 1:

### [BYE-LAW 3 - ELECTION REGULATIONS](#)

*If the above link does not work, the paper can be found via our [Governance](#) page > Bye-law 3. A full copy of the Elections Regulations will be provided at Candidate Briefing as part of your Candidate Pack.*

# QUESTIONS?

**If you have any questions relating to the by-election, at any stage of the process, please contact Tiff on the below email. (It's much better to double check and ask if you're unsure about something!)**

[suelection@winchester.ac.uk](mailto:suelection@winchester.ac.uk)

**Tiffany Burnett**, Deputy Returning Officer  
[Tiffany.Burnett@winchester.ac.uk](mailto:Tiffany.Burnett@winchester.ac.uk)